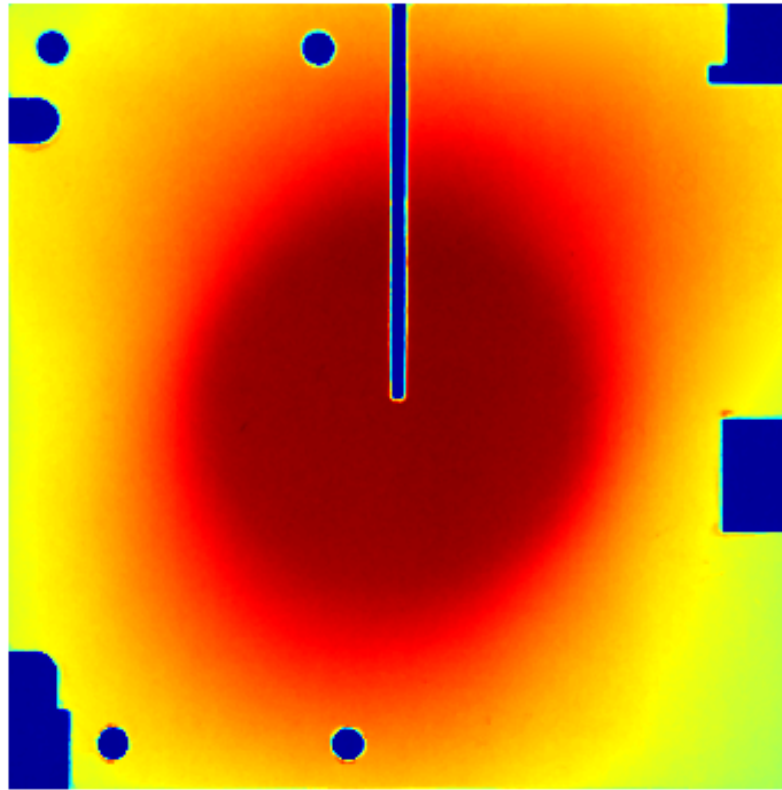


CyberKnife End to End Report

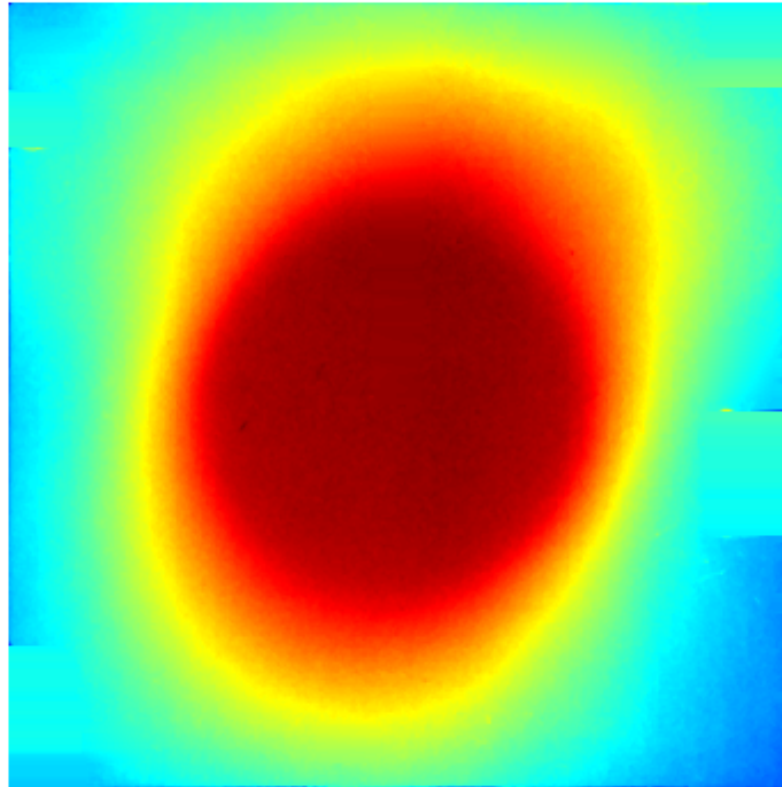
Anterior Left Image



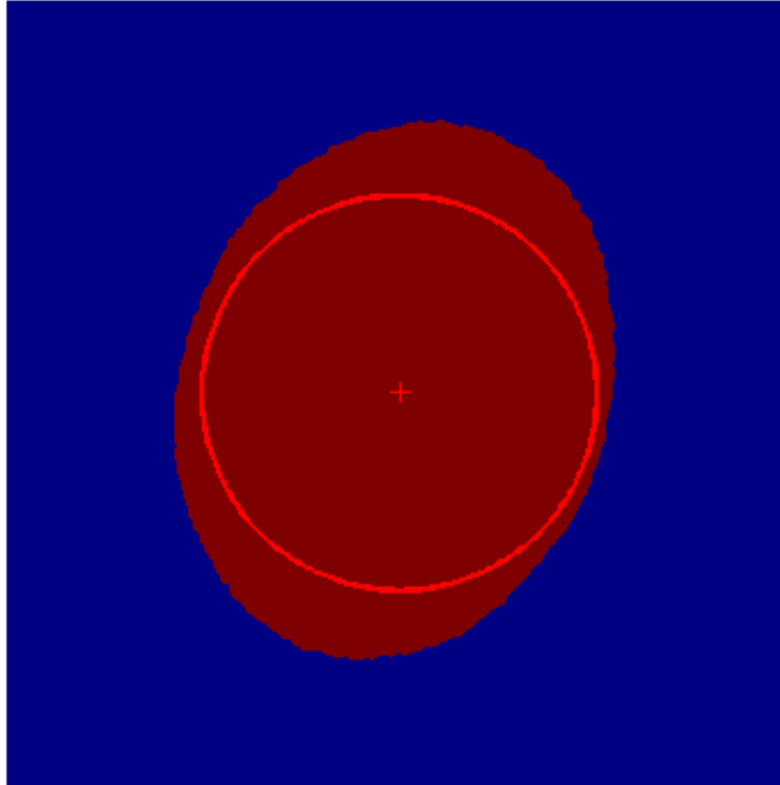
Anterior Left Image Information

File Name	C:\RIT\RIT113V4\Demo Im...\Skull_pass_red_AL.mat
Color Channel	red
Top Orientation	Anterior
Left Orientation	Left
Distance from Left Edge (mm)	31.66
Distance from Anterior Edge (mm)	31.44
Angle of Rotation (degrees)	0.3965

Anterior Left Filled Image



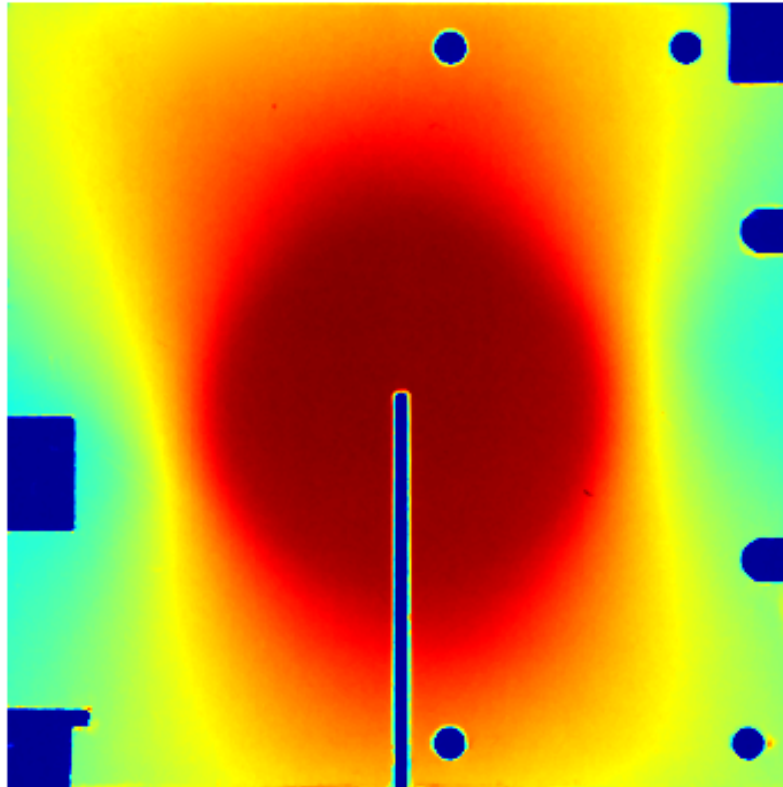
Anterior Left Threshold Area



Anterior Left Threshold Information

Centroid Area	165934
Pixels to Left	373.95
Pixels to Top	372.59
Eccentricity	0.62
Coutour Area/Ball Area	1.5

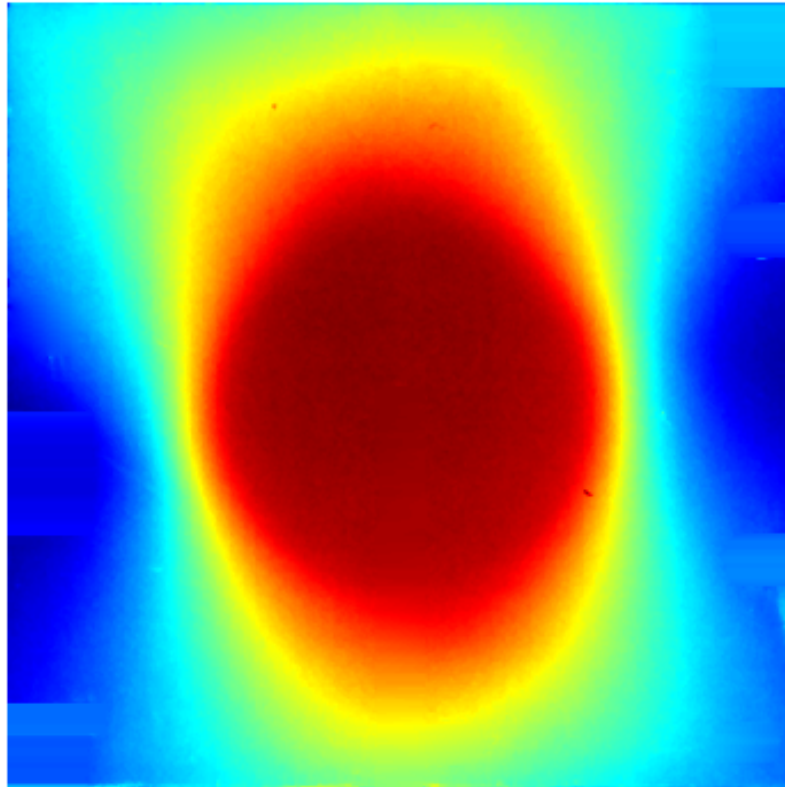
Anterior Superior Image



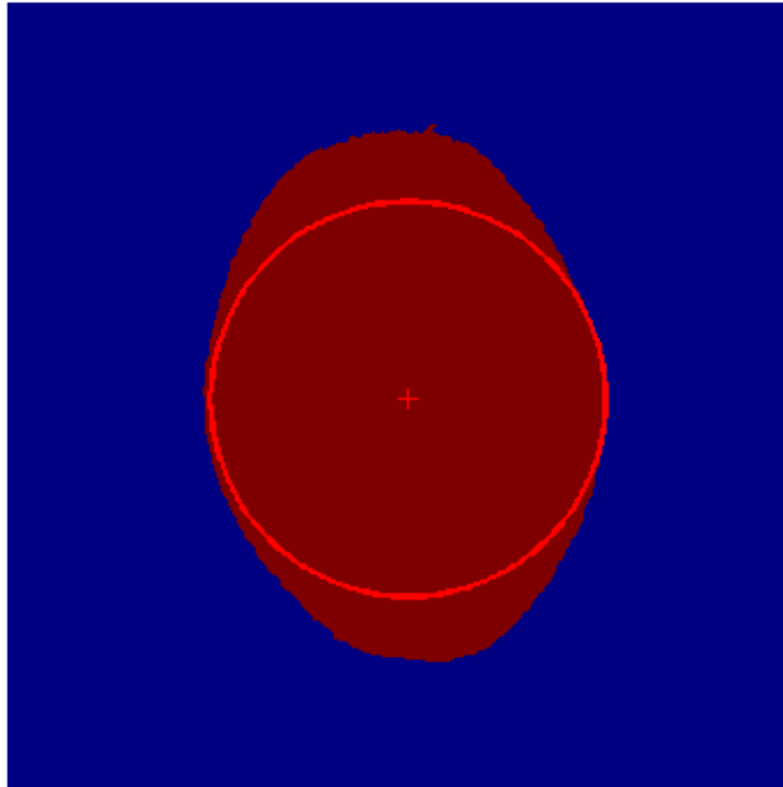
Anterior Superior Image Information

File Name	C:\RIT\RIT113V4\Demo Im...\Skull_pass_red_AS.mat
Color Channel	red
Top Orientation	Anterior
Left Orientation	Superior
Distance from Superior Edge (mm)	32.17
Distance from Anterior Edge (mm)	31.77
Angle of Rotation (degrees)	0.1976

Anterior Superior Filled Image



Anterior Superior Threshold Image



Anterior Superior Threshold Information

Centroid Area	147039
Pixels to Left	379.93
Pixels to Top	376.53
Eccentricity	0.67
Coutour Area/Ball Area	1.33

Delta Man

X (cm)	0.042
Y (cm)	0.009
Z (cm)	0.014

Error Information

Left Error (mm)	0.09
Anterior Error A/L Image (mm)	0.31
Superior Error (mm)	-0.42
Anterior Error A/S Image (mm)	-0.02
Average Anterior Error (mm)	0.14
Total Targeting Error (mm)	0.45
Total Targeting Error Pass/Fail	Pass

Calibration Information and Pixel Measurement

Calibration Mode	Uncalibrated
Calibration File Name	
Horizontal pix/mm	11.811
Vertical pix/mm	11.8504
Superior Position (mm)	31.75
Anterior Position (mm)	31.75
Left Position (mm)	31.75
Contour Threshold	26101
Film Minimum	19704.7891
Background Film	50297

Analysis Settings

Maximum Error Tolerance (mm)	0.95
CK Threshold	70
Ideal Superior Position (mm)	31.75
Ideal Anterior Position (mm)	31.75
Ideal Left Position (mm)	31.75
Filter Type	none
Filter Size	none