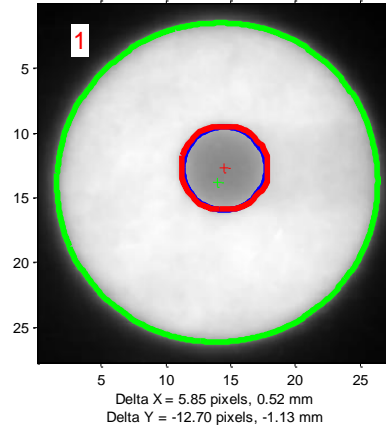
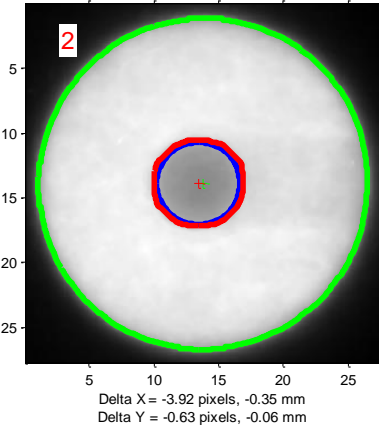


Stereotactic Alignment Settings
 Filename: ...stereotactic alignment demo.n4
 Entered ROI Size: 2.75 cm
 Entered Ball Size on Image: 0.7 cm
 Entered Magnification Factor: 1
 Entered Number of Cones: 4
 Pixel Scale (No Mag.): 0.0089 cm
 Pixel Scale (After Mag.): 0.0089 cm
 Number of Cones Found: 4
 Est. Actual Ball Diam. with Mag.(cm): 0.65

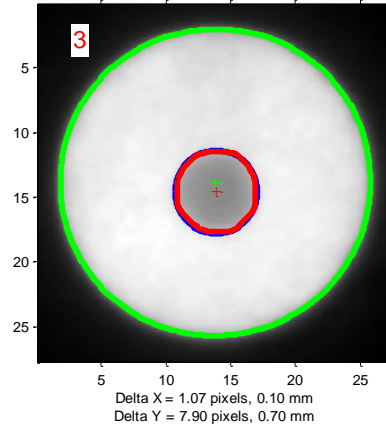
Ball Centroid: Row = 142.50, Column = 163.04
 Cone Centroid: Row = 155.21, Column = 157.19
 Distance = 13.99 pixels, 1.24 mm



Ball Centroid: Row = 155.64, Column = 151.37
 Cone Centroid: Row = 156.27, Column = 155.29
 Distance = 3.97 pixels, 0.35 mm



Ball Centroid: Row = 163.53, Column = 156.30
 Cone Centroid: Row = 155.63, Column = 155.23
 Distance = 7.97 pixels, 0.71 mm



Ball Centroid: Row = 150.90, Column = 157.43
 Cone Centroid: Row = 153.14, Column = 156.09
 Distance = 2.60 pixels, 0.23 mm

