

ACR CT Phantom - Module 2 Report

OVERALL RESULTS



ALL TOLERANCES PASSING

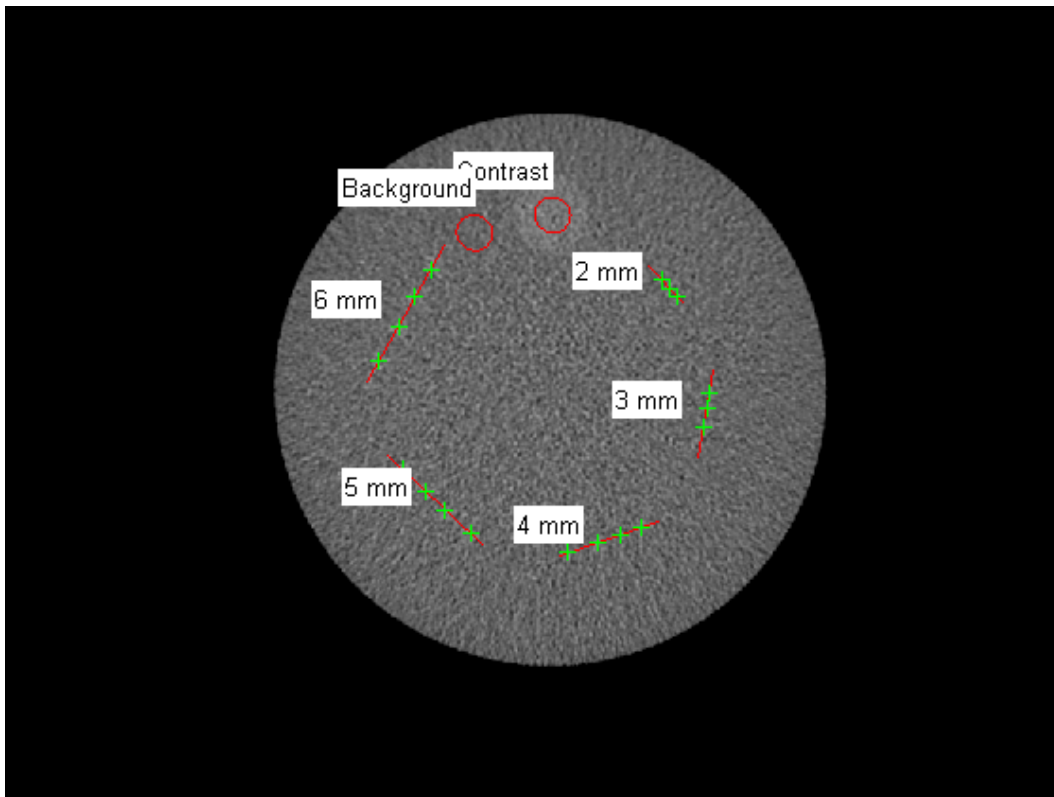


ANALYSIS COMPLETE

Image Information

Filename	C:\RIT\RIT113V4\demo images_old\Radia Demo Images\ACR_CT\Module_2
Institution	Boulder Community Foothills Hosp
Station	CT01_OC0
kVp	120
mA	300
Protocol	6.1 ABDOMEN/PELVIS
Filter	BODY FILTER
Convolution Kernel	STANDARD
DICOM Slice Thickness(mm)	5
SOP Instance UID	1.2.840.113619.2.55.1.1762897610.2203.1179930891.806.7
Slice Location	30
ACR Protocol	Adult Abdomen

Analysis Image



Contrast to Noise Ratio (CNR)

Contrast to Noise	1.29
ACR Minimum CNR for Adult Abdomen	1.00
CNR Pass-Fail	Pass

Contrast Statistics

Contrast Cylinder Mean	96.35
Contrast Cylinder Standard Deviation	4.89
S/N Contrast Cylinder	19.69
Background Mean	90.13
Background Standard Deviation	4.80
S/N Background	18.79

Rod Detection

Rod Size (mm)	Num. Rods Detected
6	4
5	4
4	4
3	3
2	3

Analysis Settings

Filter Size	9
Large Rod Threshold	1.6
2 mm Rod Threshold	1.3