

CATPHAN Resolution - 528 Module Report

OVERALL RESULTS



ALL TOLERANCES PASSING

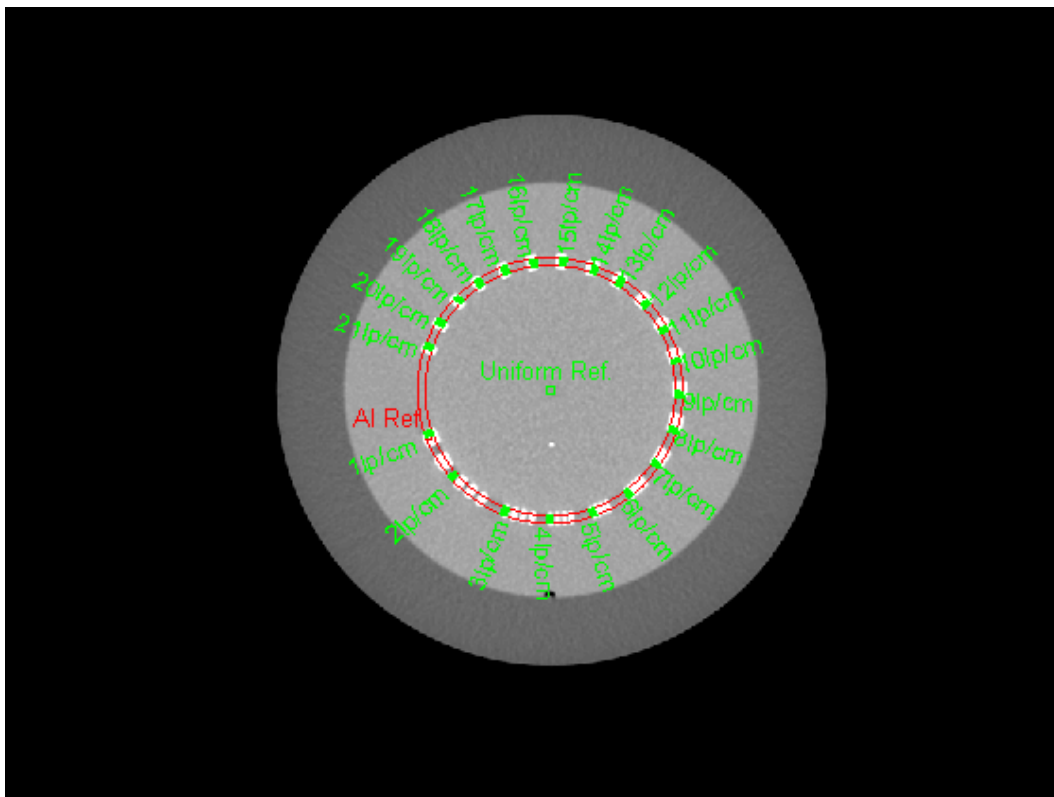


ANALYSIS COMPLETE

Image Information

| | |
|---------------------------|---|
| Filename | E:\Radiolotherapy\Vendors 2019\RIT\RIT Demo Images\Demo Images\CATPHAN\CTP528 |
| Institution | |
| Station | |
| kVp | 120 |
| mA | 442 |
| Protocol | |
| Filter | BODY FILTER |
| Convolution Kernel | STANDARD |
| DICOM Slice Thickness(mm) | 2.5 |
| SOP Instance UID | 1.2.840.113619.2.55.3.279721844.514.1284471618.226.23 |
| Slice Location | 60.5 |

Analysis Image



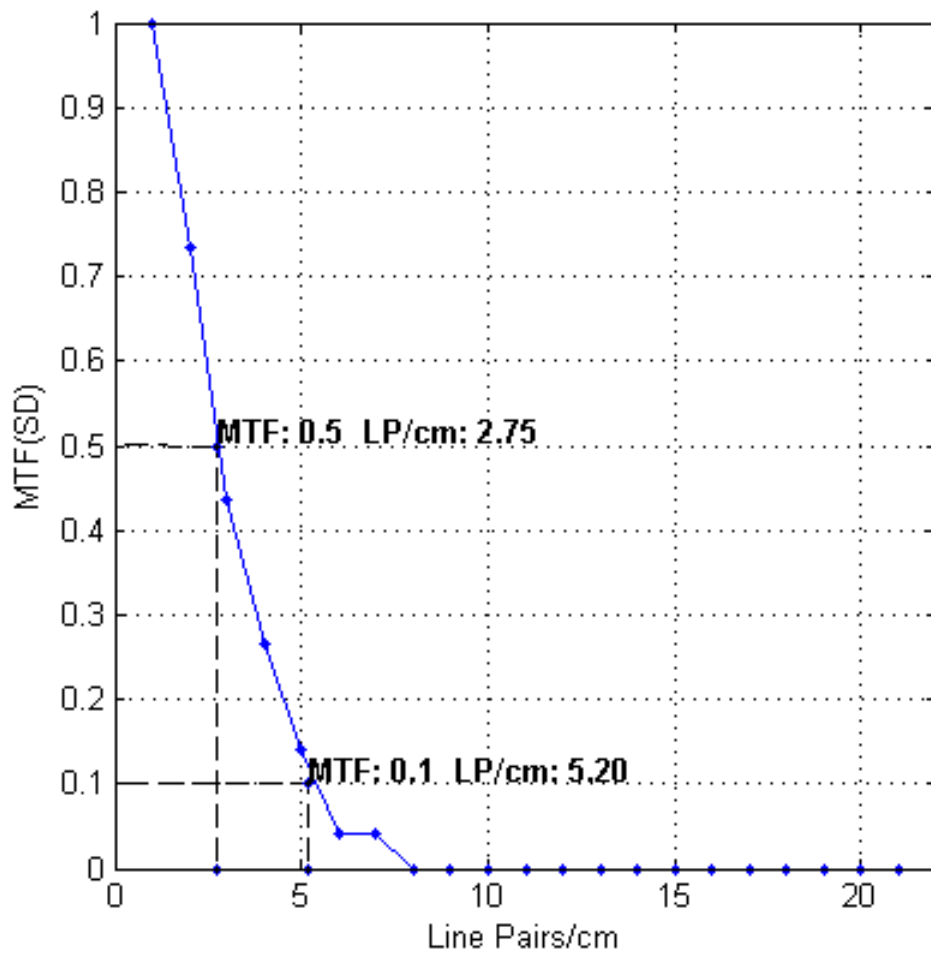
Line Pairs Detected

| Spatial Resolution (lp/cm) | Minimum Resolution (lp/cm) | Pass/Fail |
|----------------------------|----------------------------|-----------|
| 7 of 21 detected. | 7 | Pass |

MTF (Based on Standard Deviation)

| Bar | MTF(SD) |
|----------|---------|
| 1 lp/cm | 1.00 |
| 2 lp/cm | 0.74 |
| 3 lp/cm | 0.44 |
| 4 lp/cm | 0.26 |
| 5 lp/cm | 0.14 |
| 6 lp/cm | 0.04 |
| 7 lp/cm | 0.04 |
| 8 lp/cm | 0.00 |
| 9 lp/cm | 0.00 |
| 10 lp/cm | 0.00 |
| 11 lp/cm | 0.00 |
| 12 lp/cm | 0.00 |
| 13 lp/cm | 0.00 |
| 14 lp/cm | 0.00 |
| 15 lp/cm | 0.00 |
| 16 lp/cm | 0.00 |
| 17 lp/cm | 0.00 |
| 18 lp/cm | 0.00 |
| 19 lp/cm | 0.00 |
| 20 lp/cm | 0.00 |
| 21 lp/cm | 0.00 |

MTF Curve



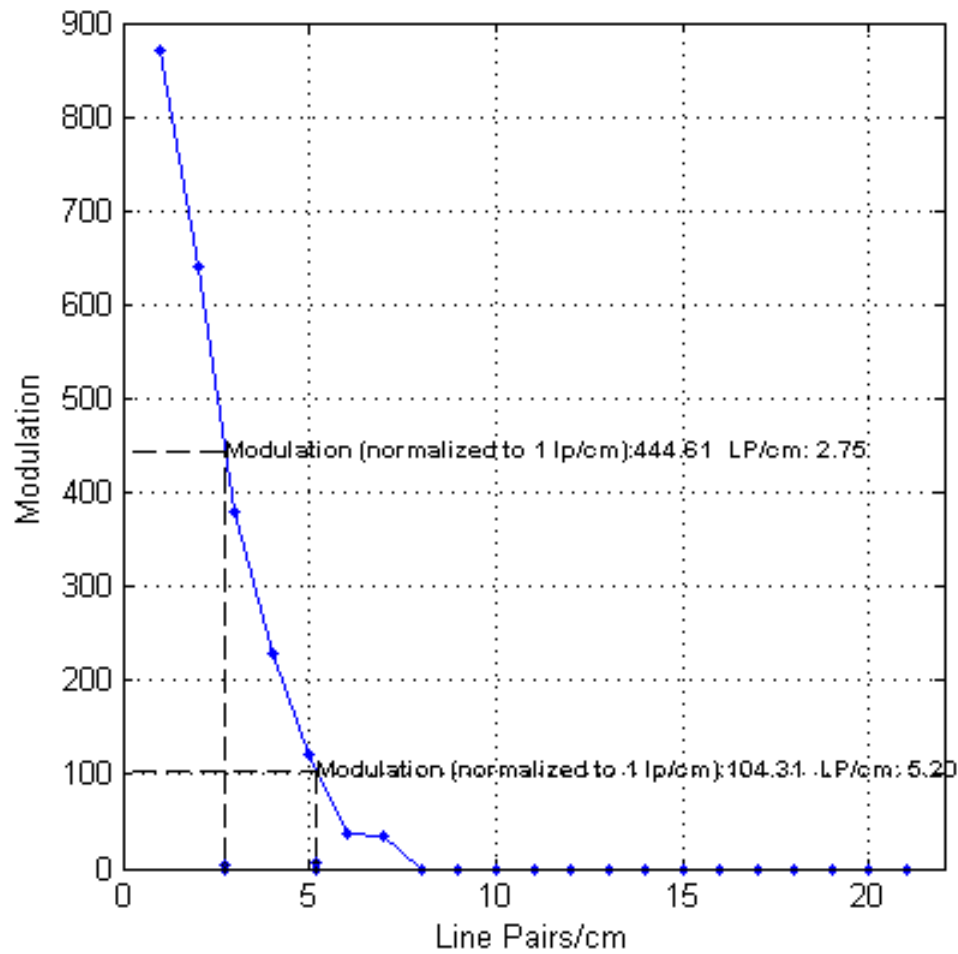
Interpolated LP

| MTF | Interpolated lp/cm |
|-----|--------------------|
| 0.5 | 2.75 lp/cm |
| 0.1 | 5.20 lp/cm |

Modulation

| Bar | Modulation | Comments |
|----------|------------|--|
| 1 lp/cm | 869.44 | |
| 2 lp/cm | 639.43 | |
| 3 lp/cm | 378.86 | |
| 4 lp/cm | 229.71 | |
| 5 lp/cm | 121.86 | |
| 6 lp/cm | 36.14 | |
| 7 lp/cm | 35.14 | |
| 8 lp/cm | 0.00 | Incorrect number of bars detected in this pattern. |
| 9 lp/cm | 0.00 | No bars or spaces detected. |
| 10 lp/cm | 0.00 | Incorrect number of bars detected in this pattern. |
| 11 lp/cm | 0.00 | No bars or spaces detected. |
| 12 lp/cm | 0.00 | No bars or spaces detected. |
| 13 lp/cm | 0.00 | No bars or spaces detected. |
| 14 lp/cm | 0.00 | No bars or spaces detected. |
| 15 lp/cm | 0.00 | No bars or spaces detected. |
| 16 lp/cm | 0.00 | No bars or spaces detected. |
| 17 lp/cm | 0.00 | No bars or spaces detected. |
| 18 lp/cm | 0.00 | No bars or spaces detected. |
| 19 lp/cm | 0.00 | No bars or spaces detected. |
| 20 lp/cm | 0.00 | No bars or spaces detected. |
| 21 lp/cm | 0.00 | No bars or spaces detected. |

Modulation Calculation



Interpolated LP (normalized to 1 lp/cm)

| Modulation | Interpolated lp/cm |
|------------|--------------------|
| 444.61 | 2.75 |
| 104.31 | 5.20 |

Analysis Settings

| | |
|------------------------|-----|
| Peak Threshold | 2 |
| Minimum Pulse Distance | 4 |
| Low Value Gap | 6 |
| Detection Threshold | 0.3 |
| Minimum Bars to Detect | 2 |
| Bar Threshold Delta | 25 |
| Max Objects | 3 |