

## CATPHAN Materials - 732 Module Report

### OVERALL RESULTS



ONE OR MORE TOLERANCE(S) FAILING

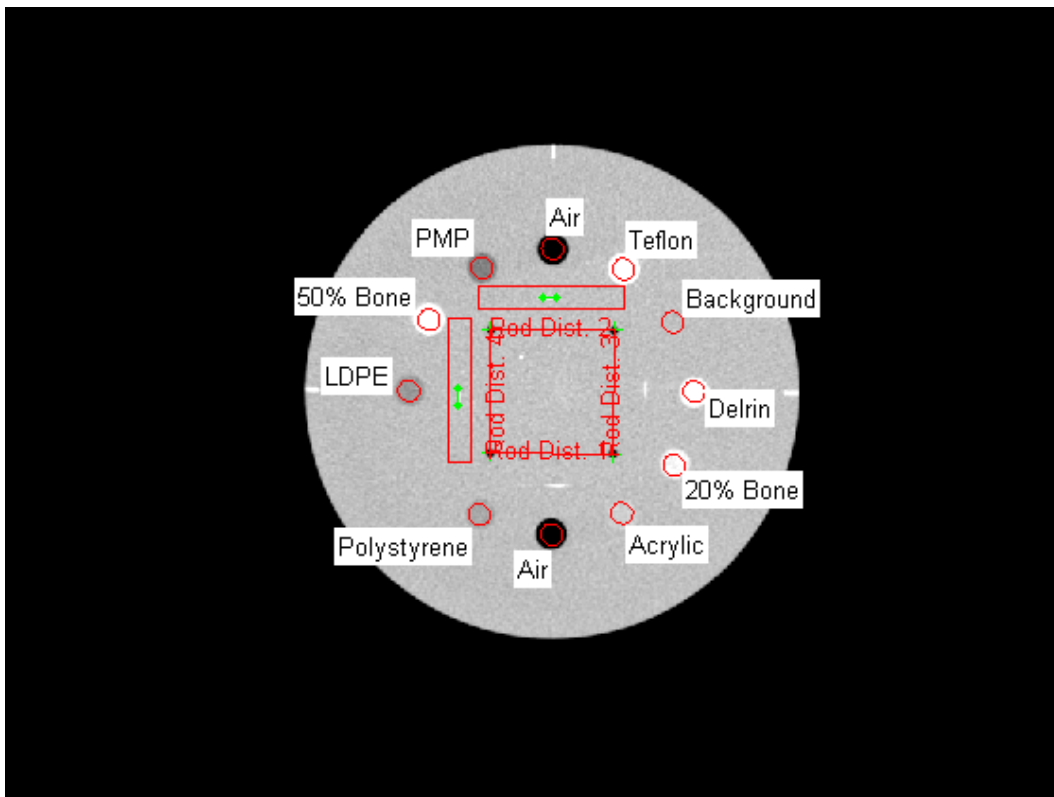


ANALYSIS COMPLETE

### Image Information

Filename	C:\RIT\RIT113V4\Demo Images\Radia Demo Images\CATPHAN\CTP604_materials.dcm
Institution	
Station	MEM_TB1
kVp	100
mA	15
Protocol	
Filter	Tit V1,FF V1
Convolution Kernel	Ram-Lak
DICOM Slice Thickness(mm)	1.9959
SOP Instance UID	1.2.246.352.62.1.4659380223155855618.3501928441691291792
Slice Location	

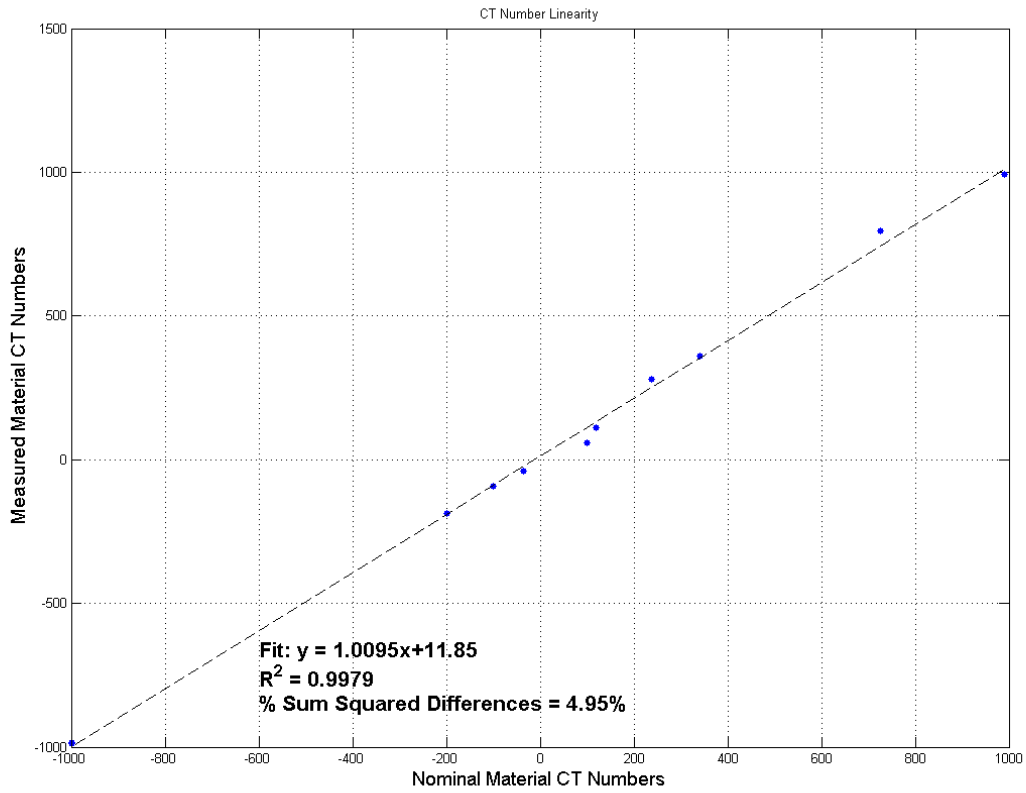
### Analysis Image



## CT Material Values

Material	Mean(HU)	SD(HU)	Min. (HU)	Target (HU)	Max. (HU)	Pass-Fail
Air	-987.66	16.50	-1030	-1000	-970	Pass
Teflon	992.54	30.38	890	990	1090	Pass
Background	59.29	29.18	90	100	110	Fail
Delrin	361.74	26.07	305	340	375	Pass
20% Bone	281.19	25.68	180	237	263	Fail
Acrylic	112.45	21.21	108	120	132	Pass
Air	-985.56	16.68	-1030	-1000	-970	Pass
Polystyrene	-39.51	24.39	-45	-35	-25	Pass
LDPE	-93.11	28.37	-110	-100	-90	Pass
50% Bone	796.42	30.88	600	725	783	Fail
PMP	-188.74	23.17	-220	-200	-180	Pass

### CT Number Linearity



## Slice Width Measurements

Orientation	Measured Slice Width (mm)	Actual Slice Width	Minimum Measured Tolerance (mm)	Maximum Measured Tolerance (mm)	Pass/Fail
Horizontal	2.40	1.9959	2	3	Pass
Vertical	2.68	1.9959	2	3	Pass

## Ramp Alignment

Orientation	Ramp Alignment vs. Center (mm)
Horizontal	-0.37
Vertical	1.10

## Rod Distances

Rod Distance	Distance (mm)	Pass/Fail (Min. = 48.96 Max. = 51.04)
1	50.00	Pass
2	49.99	Pass
3	50.05	Pass
4	50.00	Pass

## CT Number Linearity

Slope	1.0095
Intercept	+11.85
Correlation Coefficient (R <sup>2</sup> )	0.9979
Percent Sum Squared Differences	4.95

## Analysis Settings

Slice Threshold	2
Estimated Background CT Number	100
Estimated Air CT Number	-1000
Air Rod Threshold	0.33
Teflon Rod Threshold	0.33