

## CATPHAN Resolution - 732 Module Report

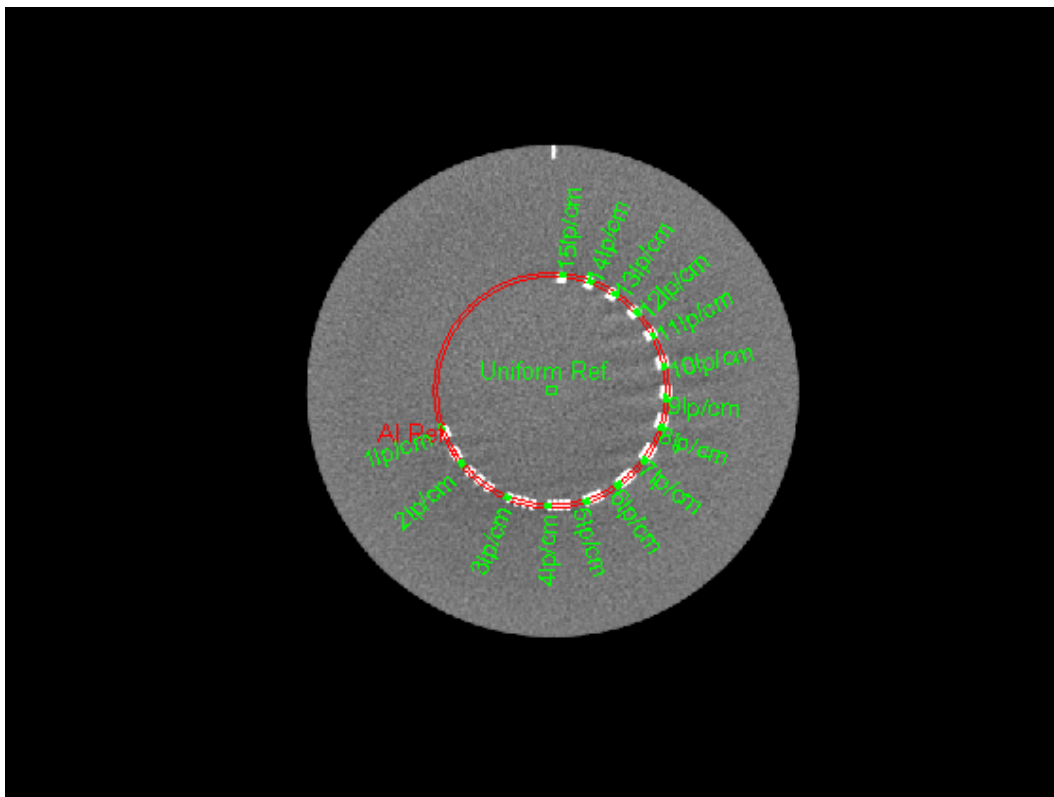
### OVERALL RESULTS

<p>ALL TOLERANCES FAILING</p>	<p>ANALYSIS COMPLETE</p>
-------------------------------	--------------------------

### Image Information

Filename	C:\RIT\RIT113V4\Demo Images\Radia Demo Images\CATPHAN\CTP604_Res.dcm
Institution	
Station	MEM_TB1
kVp	100
mA	15
Protocol	
Filter	Tit V1,FF V1
Convolution Kernel	Ram-Lak
DICOM Slice Thickness(mm)	1.9959
SOP Instance UID	1.2.246.352.62.1.4767713286318185114.17068783614129264260
Slice Location	

### Analysis Image



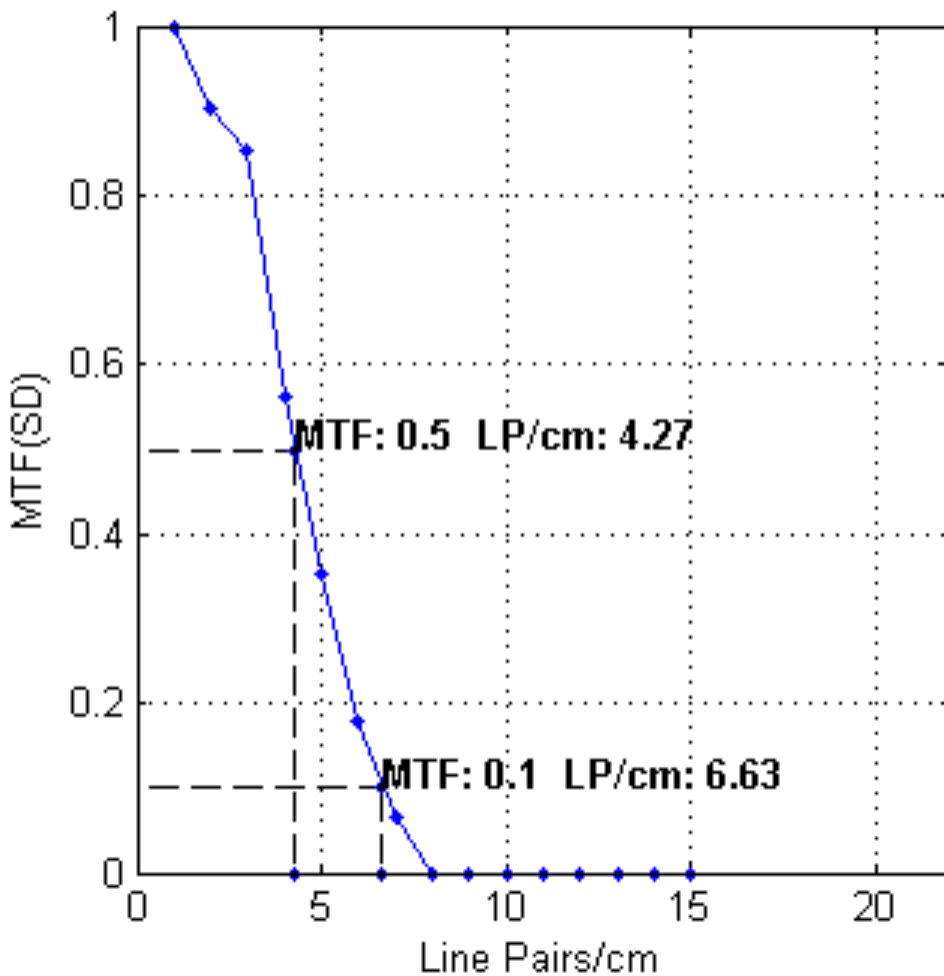
### Line Pairs Detected

Spatial Resolution (lp/cm)	Minimum Resolution (lp/cm)	Pass/Fail
7 of 15 detected.	10	Fail

### MTF (Based on Standard Deviation)

Bar	MTF(SD)
1 lp/cm	1.00
2 lp/cm	0.90
3 lp/cm	0.85
4 lp/cm	0.56
5 lp/cm	0.35
6 lp/cm	0.18
7 lp/cm	0.06
8 lp/cm	0.00
9 lp/cm	0.00
10 lp/cm	0.00
11 lp/cm	0.00
12 lp/cm	0.00
13 lp/cm	0.00
14 lp/cm	0.00
15 lp/cm	0.00

### MTF Curve



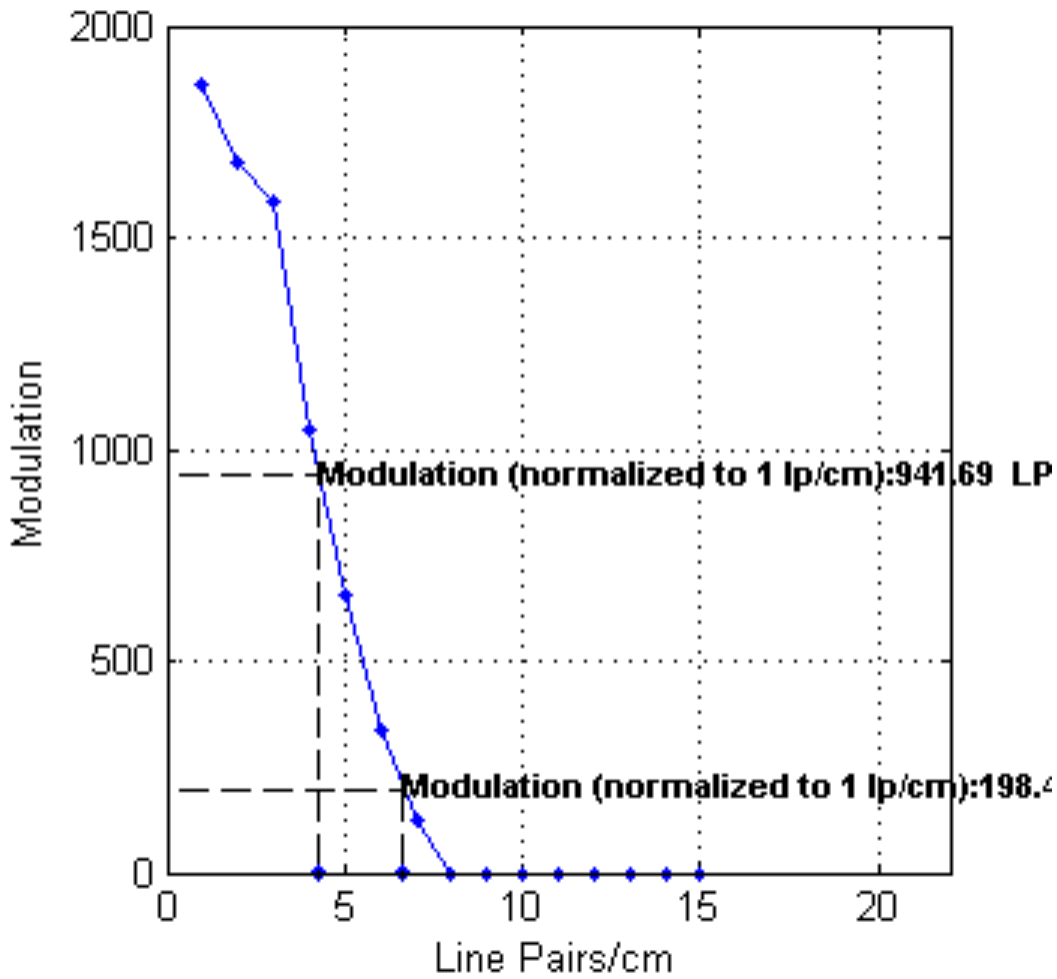
## Interpolated LP

MTF	Interpolated lp/cm
0.5	4.27 lp/cm
0.1	6.63 lp/cm

## Modulation

Bar	Modulation	Comments
1 lp/cm	1861.10	
2 lp/cm	1680.75	
3 lp/cm	1584.25	
4 lp/cm	1045.75	
5 lp/cm	653.50	
6 lp/cm	333.50	
7 lp/cm	120.75	
8 lp/cm	0.00	Incorrect number of bars detected in this pattern.
9 lp/cm	0.00	No bars or spaces detected.
10 lp/cm	0.00	No bars or spaces detected.
11 lp/cm	0.00	Incorrect number of bars detected in this pattern.
12 lp/cm	0.00	No bars or spaces detected.
13 lp/cm	0.00	No bars or spaces detected.
14 lp/cm	0.00	No bars or spaces detected.
15 lp/cm	0.00	No bars or spaces detected.

## Modulation Calculation



## Interpolated LP (normalized to 1 lp/cm)

Modulation	Interpolated lp/cm
941.69	4.27
198.45	6.63

## Analysis Settings

Peak Threshold	2
Minimum Pulse Distance	4
Low Value Gap	6
Detection Threshold	0.3
Minimum Bars to Detect	2
Bar Threshold Delta	25
Max Objects	3