

ACR MR Phantom - Slice 1 Report

OVERALL RESULTS



ALL TOLERANCES PASSING

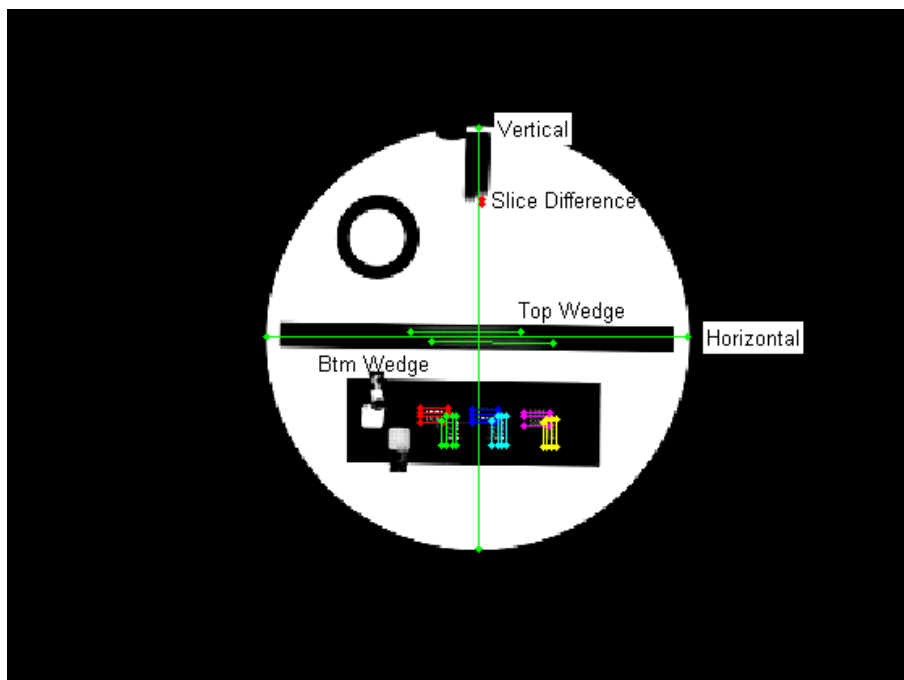


ANALYSIS COMPLETE

Image Information

Filename	C:\RIT\RIT113V4\demo images_old\Radia Demo Images\ACR_MRI\Slice_1.dcm
Institution	Rocky Mountain Open Scan-Golden
Station	MRC17485
Magnetic Field Strength	1.494
Protocol	ACR_T1
DICOM Slice Thickness(mm)	5
SOP Instance UID	1.3.12.2.1107.5.2.6.23452.30000007020103405234300001230
Slice Location	-43.816
Echo Time	20
Repetition Time	500
In Plane Phase Encoding Direction	COL
Pixel Bandwidth	90
ReceiveCoilName	
Transmit Coil Name	Body
Flip Angle	90
Device Serial Number	23452
Software Version	syngo MR 2004A 4VA25A
Scan Options	
Echo Number	0
Echo Train Length	1
Operating Mode	

Analysis Image



Geometric Accuracy

	Vertical Line	Horizontal Line
Length (mm)	191.54	191.11
ACR Minimum (mm)	188.00	188.00
ACR Maximum (mm)	192.00	192.00
Pass-Fail	Pass	Pass

Resolution

Resolution Pattern	Resolution Visibility
1.1 mm Upper Left	Visible
1.1 mm Lower Right	Visible
1.0 mm Upper Left	Visible
1.0 mm Lower Right	Visible
0.9 mm Upper Left	Visible
0.9 mm Lower Right	Visible

Minimum tolerance for Resolution Pattern visibility: 1.0 mm
 Resolution Visibility pass/fail status: Pass

Slice Thickness

Slice Thickness (mm)	5.35
ACR Minimum (mm)	4.30
ACR Maximum (mm)	5.70
Pass-Fail	Pass
Top Length (mm)	51.05
Bottom Length (mm)	56.20

Slice Difference

Slice Difference (mm)	-2.60
ACR Minimum (mm)	-5.00
ACR Maximum (mm)	5.00
Pass-Fail	Pass

Analysis Settings

Minimum Modulation	50
Slice 1 Phantom Threshold	0.5
Slice 1 FWHM Threshold	0.5