

ACR MR Phantom - Slice 11 Report

OVERALL RESULTS



ONE OR MORE TOLERANCE(S) FAILING

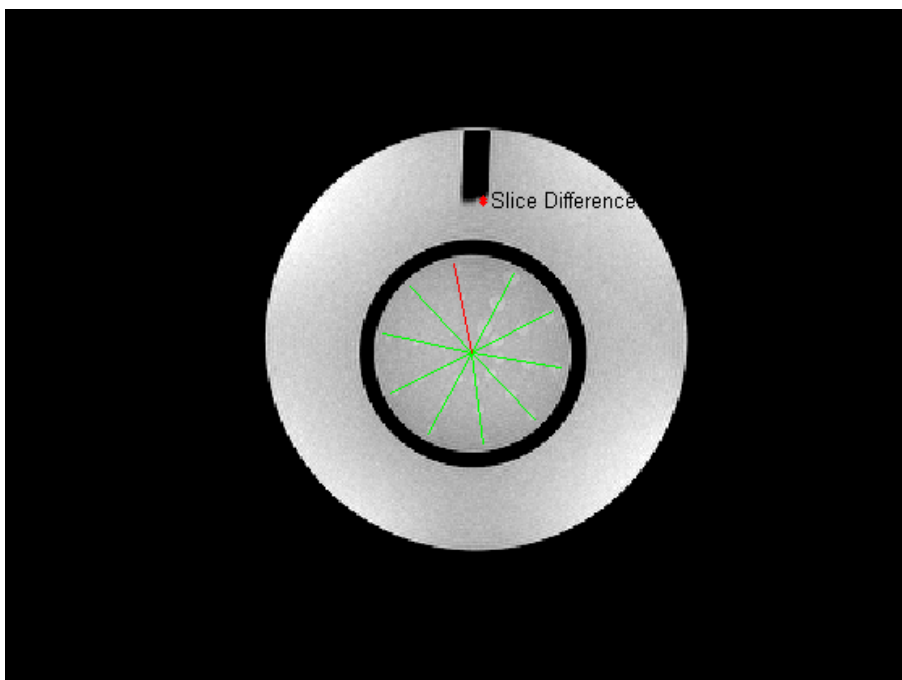


ANALYSIS COMPLETE

Image Information

Filename	C:\RIT\RIT113V4\demo images_old\Radia Demo Images\ACR_MRI\Slice_11
Institution	Rocky Mountain Open Scan-Golden
Station	MRC17485
Magnetic Field Strength	1.494
Protocol	ACR_T2
DICOM Slice Thickness(mm)	5
SOP Instance UID	1.3.12.2.1107.5.2.6.23452.30000007020103405234300001254
Slice Location	56.184
Echo Time	80
Repetition Time	2000
In Plane Phase Encoding Direction	COL
Pixel Bandwidth	80
ReceiveCoilName	
Transmit Coil Name	Body
Flip Angle	90
Device Serial Number	23452
Software Version	syngo MR 2004A 4VA25A
Scan Options	
Echo Number	1
Echo Train Length	1
Operating Mode	

Analysis Image



Spokes Detected - Slice 11

Number of Spokes Detected	Minimum Nominal Number of Spokes Detected	Pass/Fail
9	10	Fail

Slice Difference

Slice Difference (mm)	-1.23
ACR Minimum (mm)	-5
ACR Maximum (mm)	5
Pass-Fail	Pass

Contrast to Noise Ratios

Angles CW from 12:00

Spoke Number	Angle(deg)	CNR Inner	CNR Middle	CNR Outer
1	28.00	3.74	3.24	1.92
2	63.00	4.12	2.63	2.24
3	99.00	3.68	2.36	2.14
4	136.00	2.76	1.59	1.47
5	173.00	2.80	1.81	2.29
6	209.00	4.39	3.25	2.30
7	244.00	3.79	2.56	2.74
8	283.00	1.71	1.63	1.62
9	318.00	1.92	1.42	1.49
10	349.00	1.50	1.99	1.56

Analysis Settings

Slice 11 Spoke Width	9
CNR Inner Ring Slice 11	1.7
CNR Middle Ring Slice 11	1.4
CNR Outer Ring Slice 11	1.2
Structuring Element Size (Slice 11)	9
Threshold Start Slice 11	20
Threshold Stop Slice 11	35