

ACR MR Phantom - Slice 7 Report

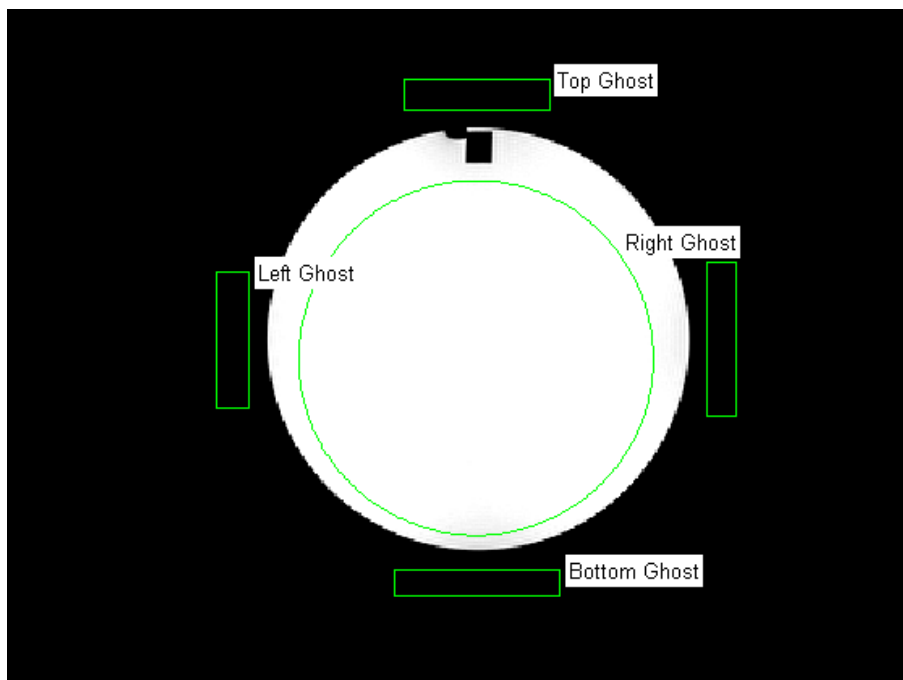
OVERALL RESULTS

<p>PASS</p> <p>ALL TOLERANCES PASSING</p>	<p>ANALYSIS COMPLETE</p>
--	--------------------------

Image Information

Filename	C:\RIT\RIT113V4\demo images_old\Radia Demo Images\ACR_MRI\Slice_7
Institution	Rocky Mountain Open Scan-Golden
Station	MRC17485
Magnetic Field Strength	1.494
Protocol	ACR_T1
DICOM Slice Thickness(mm)	5
SOP Instance UID	1.3.12.2.1107.5.2.6.23452.30000007020103405234300001233
Slice Location	16.184
Echo Time	20
Repetition Time	500
In Plane Phase Encoding Direction	COL
Pixel Bandwidth	90
ReceiveCoilName	
Transmit Coil Name	Body
Flip Angle	90
Device Serial Number	23452
Software Version	syngo MR 2004A 4VA25A
Scan Options	
Echo Number	0
Echo Train Length	1
Operating Mode	

Analysis Image



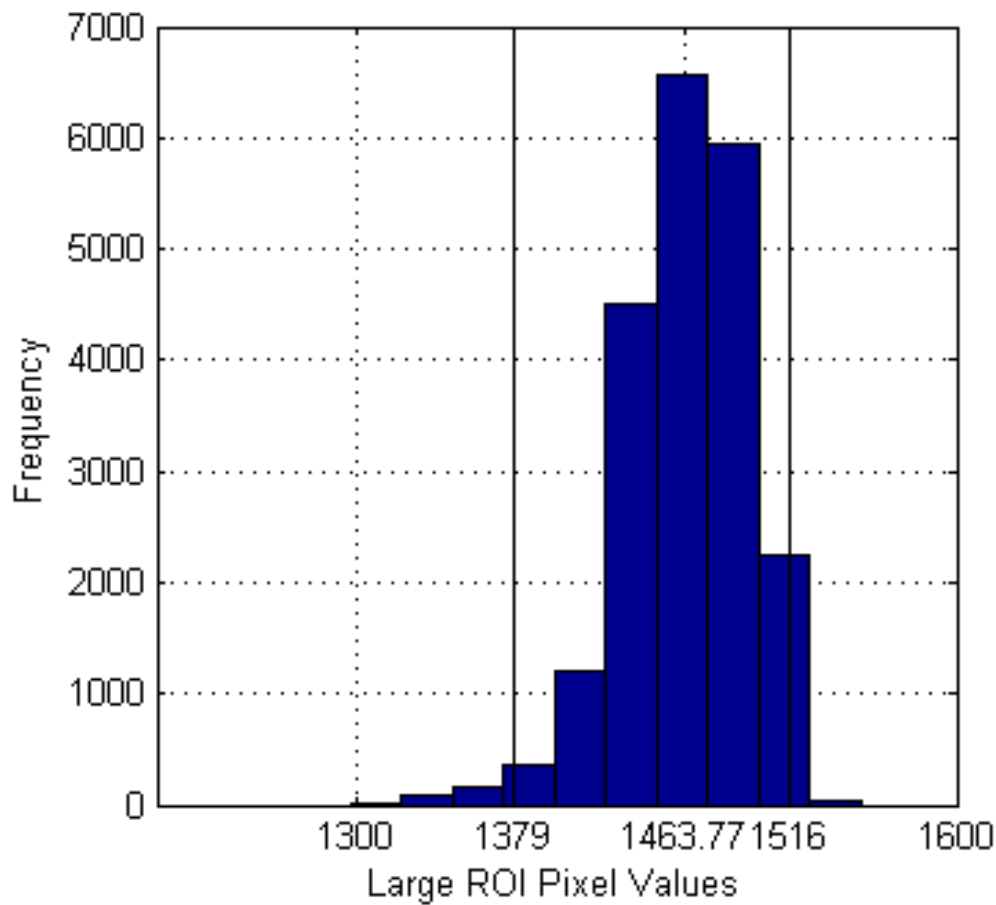
Percent Integral Uniformity

Percent Integral Uniformity	95.27
ACR Minimum	87.50
Pass-Fail	Pass

PIU Area Statistics

Mean Large ROI	1463.77
Small ROI Low Signal	1379
Small ROI High Signal	1516

Frequency of Large ROI Pixel Values



Percent-Signal Ghosting

Percent-Signal Ghosting	0.0060066
ACR Maximum	0.025
Pass-Fail	Pass

Ghost Area Statistics

Area	Mean	SD
Top	+19.27	8.46
Bottom	+24.10	9.85
Left	+12.84	6.51
Right	+12.93	6.52
Large ROI	+1465.03	29.99

Analysis Settings

Low Threshold	3
High Threshold	3
Large Area Size	200
Large Area Vertical Offset	0