

## ACR MR Phantom - Slice 8 Report

### OVERALL RESULTS



ALL TOLERANCES FAILING

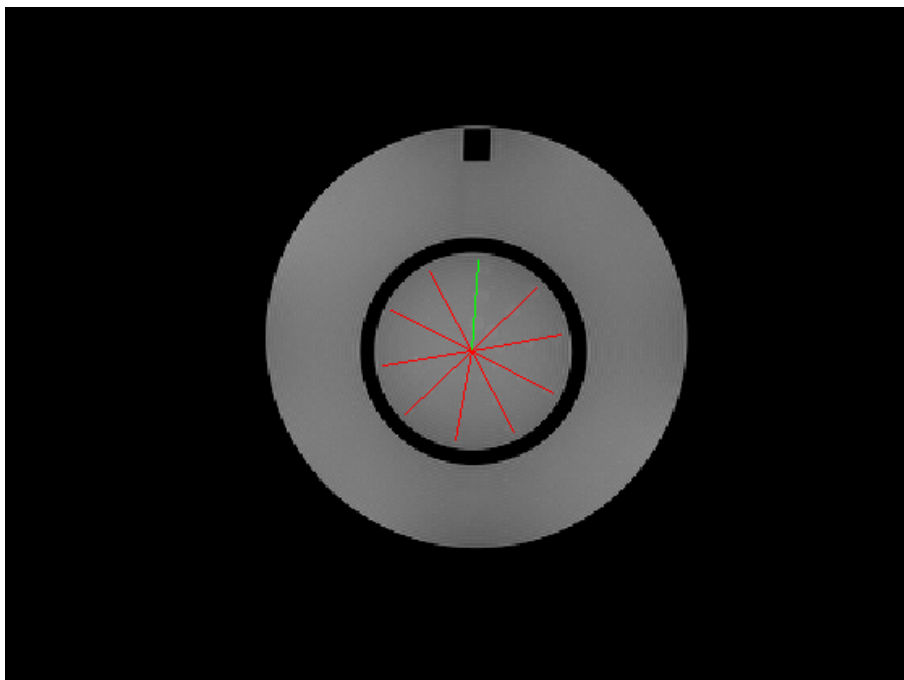


ANALYSIS COMPLETE

### Image Information

Filename	C:\RIT\RIT113V4\demo images_old\Radia Demo Images\ACR_MRI\Slice_8
Institution	Rocky Mountain Open Scan-Golden
Station	MRC17485
Magnetic Field Strength	1.494
Protocol	ACR_T2
DICOM Slice Thickness(mm)	5
SOP Instance UID	1.3.12.2.1107.5.2.6.23452.30000007020103405234300001251
Slice Location	36.184
Echo Time	20
Repetition Time	2000
In Plane Phase Encoding Direction	COL
Pixel Bandwidth	80
ReceiveCoilName	
Transmit Coil Name	Body
Flip Angle	90
Device Serial Number	23452
Software Version	syngo MR 2004A 4VA25A
Scan Options	
Echo Number	0
Echo Train Length	1
Operating Mode	

### Analysis Image



### Spokes Detected - Slice 8

Number of Spokes Detected	Minimum Nominal Number of Spokes Detected	Pass/Fail
1	8	Fail

### Contrast to Noise Ratios

#### Angles CW from 12:00

Spoke Number	Angle(deg)	CNR Inner	CNR Middle	CNR Outer
1	5.00	7.13	4.77	4.72
2	46.00	3.51	2.81	2.19
3	80.00	3.81	1.94	3.97
4	117.00	5.76	3.15	1.71
5	153.00	3.34	2.37	2.30
6	191.00	4.85	3.69	3.88
7	227.00	5.88	4.03	4.27
8	261.00	3.41	2.16	3.96
9	297.00	2.17	1.47	2.82
10	333.00	1.84	1.28	2.75

### Analysis Settings

Slice 8 Spoke Width	9
CNR Inner Ring Slice 8	2.3
CNR Middle Ring Slice 8	2.3
CNR Outer Ring Slice 8	2.3
Structuring Element Size (Slice 8)	9
Threshold Start Slice 8	20
Threshold Stop Slice 8	35