

RIT EPID Phantom Report

OVERALL RESULTS



ALL TOLERANCES PASSING

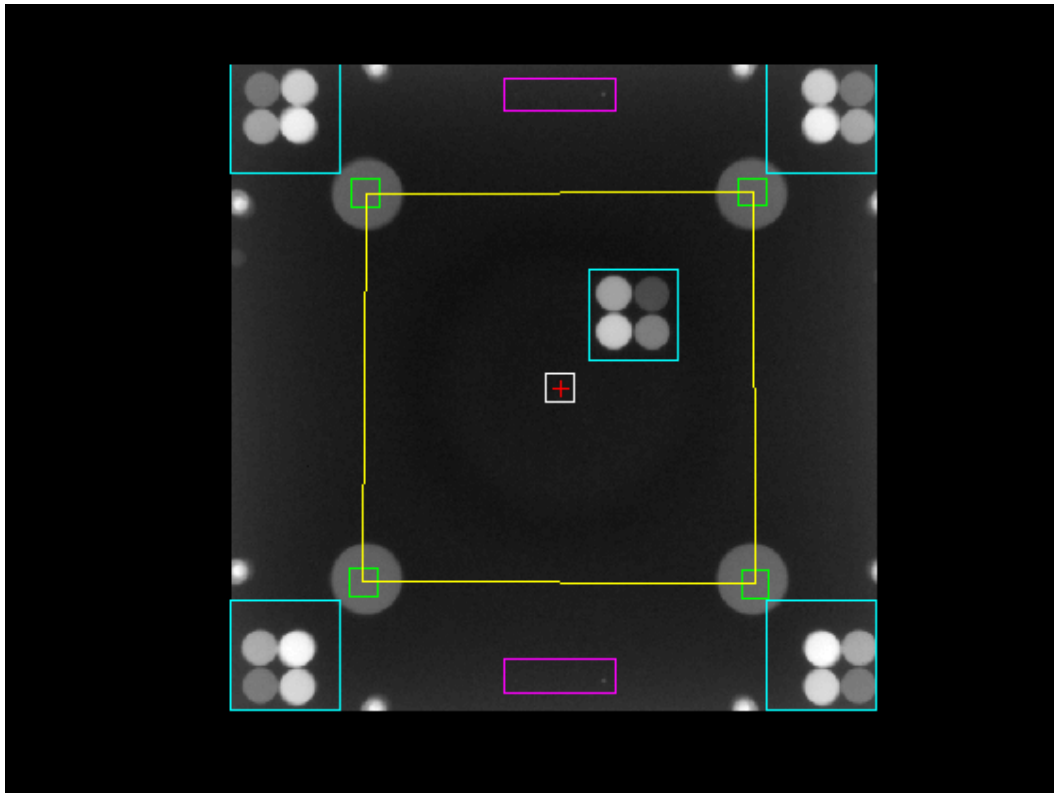


ANALYSIS COMPLETE

Image Information

Filename	C:\RIT\RIT113V4\Demo Images\Radia Demo Images\RIT EPID\aS1000.dcm
Institution	
Station	OBIWS
Image Type	ORIGINAL\\PRIMARY\\PORTAL
Acquisition Date	
Acquisition Time	
SOP Instance UID	1.2.246.352.81.3.969580807.25784.19017.158.194
RTImageDescription	6 MV, 100 MU/min Scan Mode IDU20-Full-LoX-Rad Averaged Frames 1 Dark Field Correction on Flood Field Correction on Static Pixel Defects Correction on Random Pixel Defects Correction off
PixelSpacing(mm)	0.392

Analysis Image



Geometric Accuracy

Aluminum Plug Position	Distance Between Plugs (mm)	Nominal (mm)	Difference = Distance (mm) - Nominal(mm)	Difference Pass/Fail (Tolerance <= 3 (mm))
Left	138.61	137.15	1.46	Pass
Right	139.82	137.15	2.67	Pass
Top	138.08	137.15	0.93	Pass
Bottom	139.88	137.15	2.73	Pass
Upper Left Diagonal	196.69	193.96	2.73	Pass
Lower Left Diagonal	196.73	193.96	2.77	Pass

Central Area Measurements

Mean	Standard Deviation
283.31	18.74

Uniformity Area Measurements

Measurement	Value	Tolerance	Pass/Fail
Integral Non-Uniformity (0 = perfect)	0.22	<= 0.50	Pass
SNR	15.12	>= 5.00	Pass

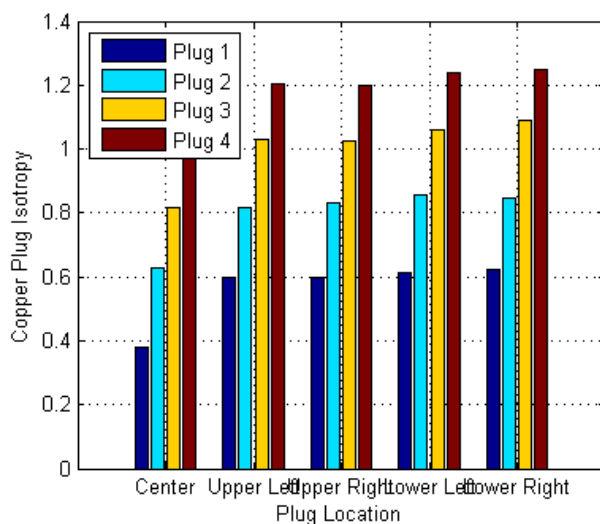
Contrast Measurements (All plugs)

Plug	Mean	STD	CNR	SNR	CNR Pass/Fail (Tolerance >= 30.00)
Upper Left	1024.01	17.05	39.52	60.05	Pass
Upper Right	1047.52	18.75	40.78	55.88	Pass
Lower Left	1092.04	17.46	43.15	62.54	Pass
Lower Right	1115.68	16.54	44.41	67.47	Pass

Copper Plug Isotropy (Normalized to center group, plug #4)

Plug Location	Plug 1 (19.6 mm)	Plug 2 (13.3 mm)	Plug 3 (8.6 mm)	Plug 4 (4.1 mm)
Center	0.3814	0.6289	0.8144	1.0000
Upper Left	0.5987	0.8147	1.0308	1.2037
Upper Right	0.5965	0.8327	1.0259	1.1977
Lower Left	0.6119	0.8577	1.0588	1.2376
Lower Right	0.6225	0.8459	1.0917	1.2481

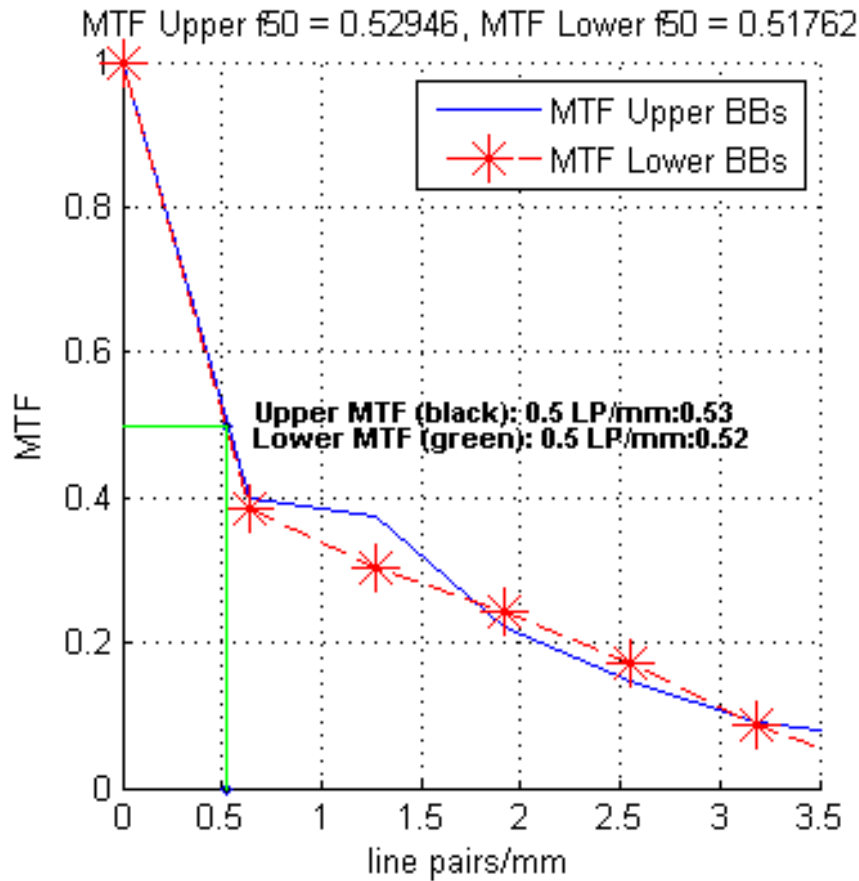
Plug Location by Copper Plug Isotropy



Resolution (MTF)

BB Location	f50 (lp/mm)	f50 Pass/Fail (Tolerance ≥ 0.10 (lp/mm))
Upper BBs	0.53	Pass
Lower BBs	0.52	Pass

Modulation Calculation



Analysis Settings

Invert Image	4
Invert Detect	0.5
Peak Height	1
Contrast Object Threshold	0.45
Magnification Factor	5.5
Trim Rows From Top	0