

Las Vegas Phantom Report

OVERALL RESULTS



ALL TOLERANCES PASSING

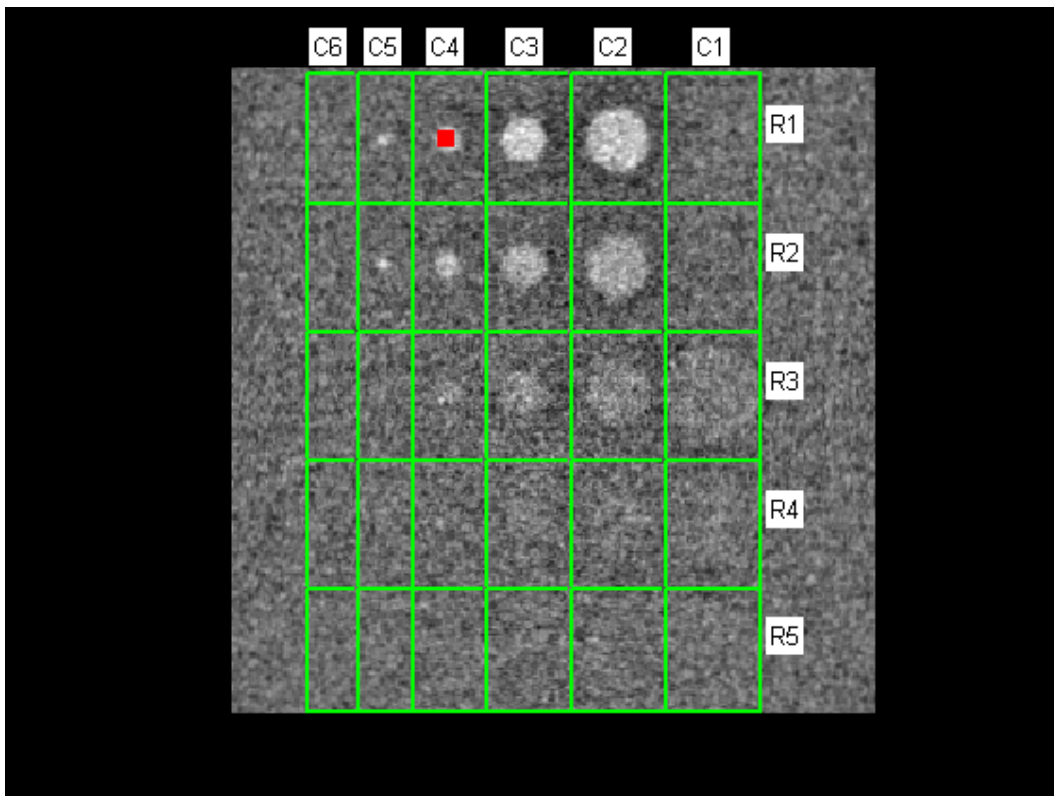


ANALYSIS COMPLETE

Image Information

| | |
|------------------|--|
| Filename | C:\RIT\RIT113V4\Demo Images\Radia Demo Images\LasVegas\Varian_thin.dcm |
| Institution | |
| Station | OBIWS |
| Image Type | ORIGINAL\\PRIMARY\\PORTAL |
| Acquisition Date | |
| Acquisition Time | |
| SOP Instance UID | 1.2.246.352.81.3.3499038515.56069.18987.129.245 |
| Phantom Type | Varian |

Analysis Image



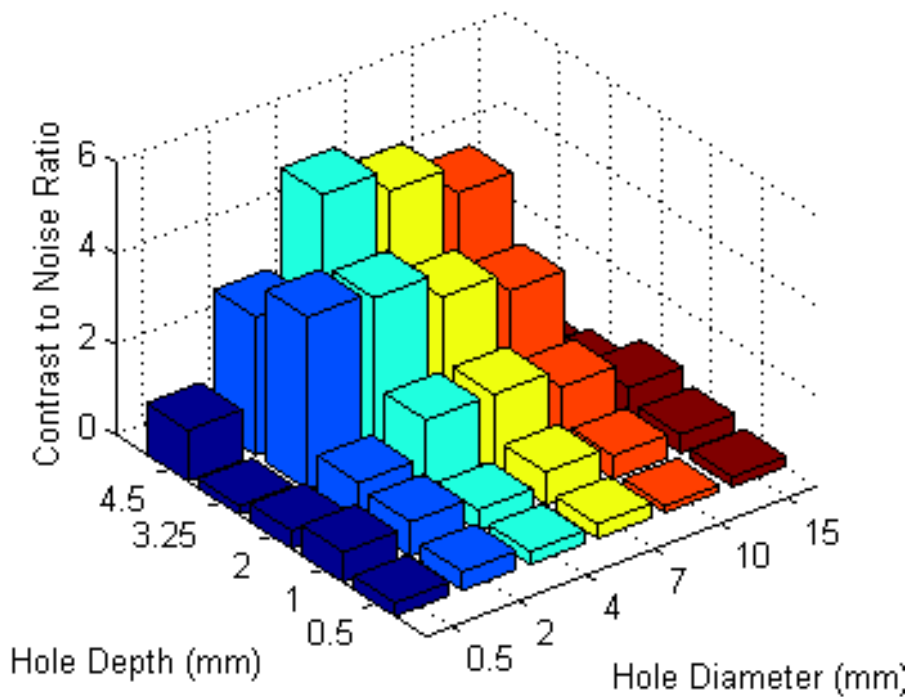
Contrast to Noise Ratios

| | C6 | C5 | C4 | C3 | C2 | C1 |
|----|------|------|------|------|------|------------------|
| R1 | 1.12 | 3.04 | 5.15 | 4.67 | 4.06 | 0.00(background) |
| R2 | 0.20 | 3.77 | 3.62 | 3.07 | 2.64 | 0.19 |
| R3 | 0.39 | 0.88 | 1.69 | 1.69 | 1.27 | 0.69 |
| R4 | 0.66 | 0.76 | 0.46 | 0.72 | 0.51 | 0.40 |
| R5 | 0.29 | 0.40 | 0.28 | 0.32 | 0.15 | 0.21 |

R4 minimum CNR tolerance: 0.30 (Pass)

C5 minimum CNR tolerance: 0.35 (Pass)

CNR for Hole Diameter and Depth



Background Statistics (R1,C1)

| Statistic | Measurement |
|--------------------|-------------|
| Mean | 45.59 |
| Standard Deviation | 8.50 |

Analysis Settings

| | |
|------------------------|------|
| Crop From Edges | 20 |
| Brightest Object | 3 |
| Phantom Threshold 2 | 0.75 |
| Contrast Threshold | 1.3 |
| Small Object Threshold | 20 |